

SDA10-48200

Lithium-ion battery system for telecom



shoto

Application Scenarios

- Backup Power Supply For FTTB、 FTTH、 ONU、 EPON
- applicable to stable grid, half-grid and other scenes

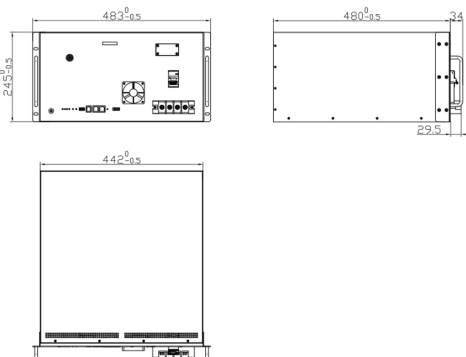
Key advantages

- High energy density: more energy with less weight and footprint
- High charge and discharge currents (short charge period)
- Long battery life (up to 3 times the battery life of a conventional battery)
- High efficiency between charging and discharging
- Higher continual power available
- Wide operating temperature
- Predictable end of life due BMS controller
- Multiple anti-theft solutions (optional): software, gyroscope, material, etc.
- Other functions (optional): Heating/LCD/Dry Contact

Product Certificates

- ISO9001
- ISO14001
- CE
- UN38.3
- UL

Overall dimensions



Technical Parameters

Item	Parameters		
1. Performance parameters			
Model	15S	16S	
Nominal voltage	48V	51.2V	
Rated capacity	200Ah(C ₅ , 0.1C to 40V at 25 °C)		
Operating voltage range	40V-56.4V	42V-57.6V	
Boost charge/Float charge voltage	54.5V/52.5V	57.6V/54V	
Charging current (current-limiting)	10A	10A	
Charging current (Maximum)	100A	100A	
Discharge current (Maximum)	100A	100A	
Discharge cut-off voltage	40V	40V	
Dimensions	Width	442±1mm	
	Height	245±1mm	
	Depth	480±1mm	
Weight	About 78.2±1kg	About 81.5±1kg	
2、 Function Description			
Installation method	Rack mounted / Wall mounted		
Communication interface	RS232/RS485*2/Dry contact*2		
Indicator state	ALM/RUN/SOC		
Parallel communication	Maximum support for 16 sets of parallel		
Terminal stud	M8		
Alarm and protection	Over voltage, under voltage, short circuit, overload, over current, over temperature, low temperature protection, etc.		
3、 Working Condition			
Cooling mode	Self-cooling		
Altitude	≤4000m		
Humidity	5%-95%		
Operating temperature	Charge	-5℃~+45℃	
	Discharge	-20℃~+50℃	
Recommended temperature	operating	Charge	+15℃~+35℃
		Discharge	+15℃~+35℃
	Storage	-20℃~+35℃	

Passion for Storage
and Green Energy

SDA10-48200

Lithium-ion battery system for telecom



SDA10- 48200 series Constant Current Discharge Characteristics (25°C,77°F)

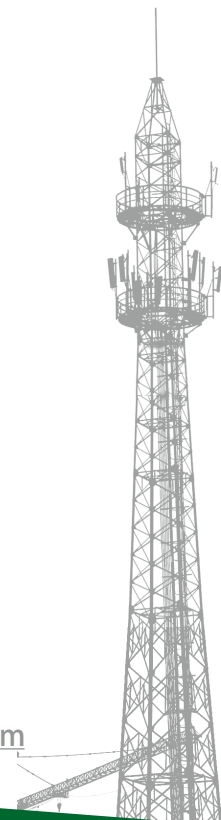
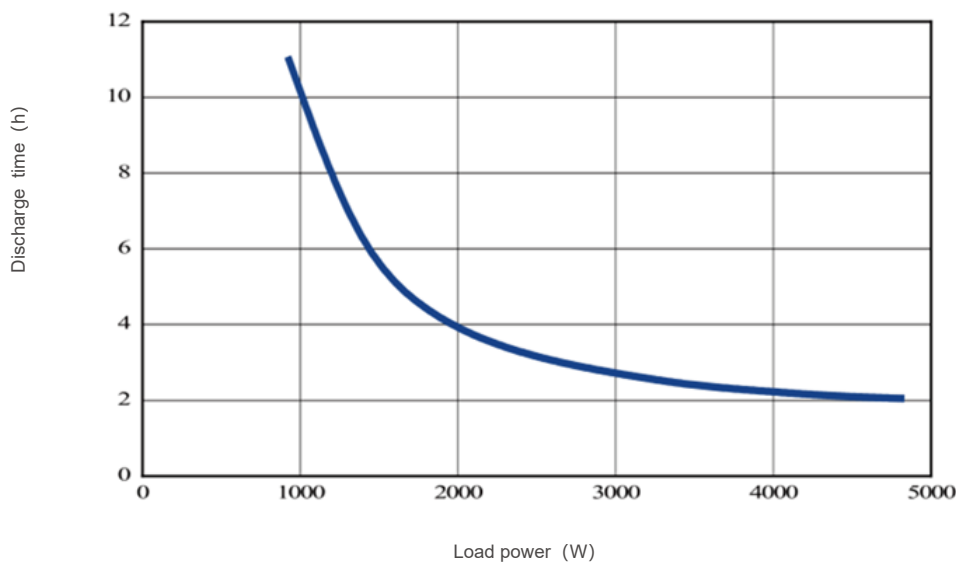
Voltage	Current/A				
	0.1C	0.2C	0.3C	0.4C	0.5C
46.5V	9.55	4.7	3.04	2.2	1.67
45.0V	9.89	4.87	3.19	2.34	1.82
43.5V	10.12	4.97	3.27	2.42	1.9
42.0V	10.3	5.1	3.34	2.47	1.95
40.0V	10.5	5.2	3.41	2.54	2

SDA10-48200 Constant Power Discharge Characteristics (25°C,77°F)

Voltage	Power/W				
	960	1920	2880	3840	4800
46.5V	9.54	4.69	3.02	2.18	1.65
45.0V	9.88	4.85	3.17	2.32	1.8
43.5V	10.1	4.95	3.24	2.41	1.89
42.0V	10.28	5.1	3.33	2.43	1.92
40.0V	10.35	5.15	3.37	2.44	1.95

Discharge Curves

SDA10-48200 Discharge time at different load power



Declaration: This information is generally descriptive only and is not intended to make or imply any representation, guarantee or warranty with respect to any cells and batteries. Cell and battery designs/specifications are subject to modification without notice. Contact CHINASHOTO for the latest information.